



# Riverside Presbyterian Church

## Weekly News & Events

**Sunday, July 30, 2023**

Dear RPC,

I hope you all have been staying cool this week. Fortunately it looks as though the weather will be a little less extreme on Saturday and Sunday during [World Nature Conservation Weekend](#). We can celebrate God's good creation by joining in some of the activities that are planned in the neighborhood ([click here for the flier](#)). I look forward to a work party and a tour of the Swan Pond, which is RPC's neighbor across the street. On Sunday morning we will then have an opportunity to hear from the team that is now engaged in a week of service in Kentucky, and there will be additional service activities for all ability levels during fellowship hour. Praise God for all of this good work!

**FROM THE PASTOR**

-Pastor Mark

### **SAVE THE DATE — AUGUST 6, 10:00 AM**

Rev. Mark Zimmerly's Service of Installation followed by fellowship.  
The Presbyterian Moderator, Rev. Barbara Gorsky, will preach for the Installation Service.



### **5th SUNDAY, JULY 30**

This Sunday is a 5<sup>th</sup> Sunday. Join us for abbreviated worship where we will hear from the youth returning from the mission trip. Afterward, fellowship and three Matthew 25 based service opportunities: cards to prisoners to be sent by Companions Journeying Together, advocacy through Bread for the World by supporting legislation that would combat food insecurity, and caring for the community with Swan Pond clean-up. Something for everyone!

**STRAWBERRY SOCIAL**

# THANK YOU!

Many thanks to all who participated in any way to help make the social a wonderful community event! It was a fun night and over \$1,000 was raised for the Little Food Pantry.



It is with sadness that I inform you of the death of Harriet Kweton on July 20. Harriet was 101 years old and member of RPC for 79 years. Please keep her friends and family in your prayers. There will be a Memorial Service at a later date.

## VOTE FOR THE RIVERSIDE FARMER'S MARKET!

The Riverside Farmer's Market vendors are supporting the LFP with pizzas and produce. You can help support the market by voting in this opportunity they have for grant funds. <https://markets.farmland.org/market/riverside-farmers-market-2/>



## A NOTE FROM YOUR TREASURER

We are halfway through the year, and I'm very thankful for how devoted and generous everyone has been in their giving. Keep it up! Every little bit helps to keep RPC a strong and vibrant place for worship, mission, and fellowship. -- Ellen M. Hamilton



## LITTLE FOOD PANTRY MANAGER

As part of Doug Asbury's role of Volunteer in Mission, he will be overseeing the management of the Little Food Pantry. Should you want to donate items, volunteer

your time, or have any questions or suggestions, please see Doug Asbury. And thank him for his service in this capacity! The LFP is arguably our greatest mission and is helping to sustain nearly 100 people each day.

---

## DOUG TO D.C.



MOBILIZING WOMEN  
FOR PEACE IN KOREA  
WOMENCROSSDMZ

July 26- 31, our Volunteer in Mission, Doug Asbury, will travel to Washington, D.C. to attend and take part in an event sponsored by Women Cross DMZ and other Korea peace groups who are seeking to bring an end to the Korean War, which has been only in cease-fire status since July 27, 1953. Please pray for peace on the Korean Peninsula and the success of the efforts of those who will gather next week. See Doug for information on the film “Crossings”, a film that chronicles the efforts of WCDMZ.



---

## STAFF TRANSITION

My role as Minister of Mission and Outreach will be phased out on August 15 and a new role of Coordinator of Children’s Ministry will phase in. One constant is the Preschool Director calling for which I am thankful. The Mission and Outreach tasks are being shared among staff and volunteers, myself included. If you want to help with Refugee Resettlement, I’m the volunteer to see. Food Panty your passion? See Doug. A desire to expand the community’s knowledge of RPC and our deeds? Volunteers are desired, especially for social media outreach. Coordinating Children’s Ministry is a nice way of saying I’ll ensure Faith Formation for the children 5<sup>th</sup> grade and younger in the congregation. It’s coming full circle to my DCE Days and I’m excited for this opportunity! More on that next week. – Lynda Nadkarni

---

## MISSION & OUTREACH

We are collecting school supplies again this year for Community Support Services in Brookfield. CSS supports participants with intellectual/developmental disabilities as well as families who cannot afford the supplies their children need for school. Backpacks and spiral notebooks are especially needed. See Sandra Kappmeyer about ideas where to purchase. We are also collecting gently used/serviceable shoes for children and adults, as well as new socks for children. There are collection bins outside the office.



Community Support Services, Inc.

---

## PER CAPITA



The 2023 per capita is \$36.50/member. We are required to pay per capita for each member to the Presbytery whether members donate or not, so every unpaid per capita hits our bottom line. Please pay yours!





## 150th BIRTHDAY

As we wind down the 150<sup>th</sup> year, there are still ways you can support the efforts and have a beautiful keepsake! There are lobes of stained glass that have been beautifully framed by Jon Jansky available for a donation of \$150 (small) and \$250 (large). The few remaining are on display in the social hall.

## SUNDAYS WITH TED & FRIENDS – 6:00 p.m.



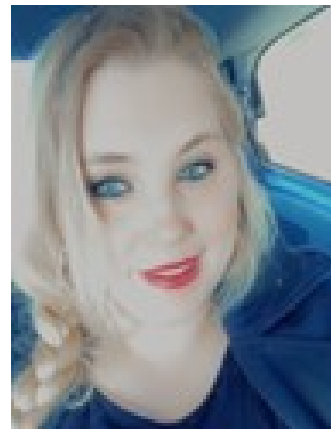
We will meet in person in the church library and via Zoom. Use the following link for Zoom video: <https://us06web.zoom.us/j/87222338595> To join by phone, dial and follow the prompts to enter the meeting number: +13126266799,,87222338595# You can access a clickable link on the RPC website, or request one via email from Doug Asbury at [dougasbury@gmail.com](mailto:dougasbury@gmail.com).

7/30 — No Sundays with TED today.

## MEET OUR SUNDAY CHILDCARE TEAM



My name is Keri Herrera (Nekovar) and I've been doing the child care at Riverside Presbyterian Church for 35+ years. I've got a degree in Early Childhood Education from Roosevelt University and taught 3rd grade for 3 years in a Catholic school. Since then, I'm now a billing specialist for a label company here in the Chicago suburbs and I'm in my 15th year with the company. My husband and I currently



Hello, my name is Kayla Paulsen. I'm 28 years old! I was born in Illinois and moved around all over the states - I'm a navy kid! I have a brother who has autism. I am a mom of three. I'm a very outgoing person! I'm great with children; I've been babysitting since I was 12 years old.

live in LaGrange with our 2 cats Mickey & Minnie.



## PRESCHOOL PRESCHOOL EXPANSION

**PRESCHOOL EXPANSION** — Exciting news for our Preschool! The community asked and we answered. We will be offering a full-day program until 3 pm starting in September. To date we have 22 students enrolled with capacity for 30. Our goal is to be at full enrollment by January. You can help by sharing the good news of our great preschool! We also will embed daily Spanish lessons into the morning for all students thanks to our current Assistant Teacher Jessica Magana and our new hire Diana Moreno. Please help us spread the word when you hear of families looking for a preschool and by liking and sharing our social media posts!

## UPPER ROOM DAILY DEVOTIONALS

Copies of the July-August Upper Room are available in the sanctuary and in the rack outside the office.



- Mary Ann Sadilek
- John Lynch
- Lloyd Bradbury
- Jack Smith
- Monica Wood
- Duci Musick, daughter-in-law of Elizabeth Musick
- Alice Ann Hand, sister of Elizabeth Musick.
- Prayers for peace and comfort for family and friends grieving the death of Harriet Kewton.



Your financial gifts are important at this time. Please mail your tithes and offerings to the church. You can also give online.

Sunday's Bulletin



The church office is open Monday-Thursday 10 am - 1 pm. If you need to come at another time, please call to make arrangements.

## Opportunities for Mission

### LITTLE FOOD PANTRY

Each month this summer the Mission & Outreach Committee challenges the congregation to stock the shelves with a particular food group. In July we are requesting personal care items - feminine hygiene, toothpaste, toothbrushes, deodorant, hand/body lotion, sunblock, and face wipes.



**GIVE THE GIFT OF TIME THIS YEAR**—Make a commitment to give the Gift of Time to your church family in 2023. Consider gifting a hour a month to serve as a **greeter** or **liturgist**. No previous experience is required. Everyone is welcome to serve, instructions are provided and appreciation will be abundant. You could **donate flowers** for the church service or **host fellowship** after Sunday worship. Stop by the signup board outside of the pastor's office after worship today, sign up and share your gift. You may also call the office during the week and request to be signed up.

If you have not "liked" our church Facebook page, you can do that here: [bit.ly/FacebookRPC](https://bit.ly/FacebookRPC). This will assure you get all our updates.



Consider subscribing to the church's YouTube page. You can easily stay informed of our newest content. All you need to do is tap the subscribe icon. [RPCyoutube](https://RPCyoutube).

You **Tube**



DONATE



Website

Riverside Presbyterian Church | 116 Barrypoint Road, Riverside, IL 60546 708.447.1520

[Unsubscribe rpcoffice@rpcusa.org](mailto:rpcoffice@rpcusa.org)

[Update Profile](#) | [Constant Contact Data Notice](#)

Sent by [rpcoffice@rpcusa.org](mailto:rpcoffice@rpcusa.org) powered by



Try email marketing for free today!